



Head of the Institute

Prof. Dr. Sonja Haug (Social Research)

Prof. Dr. Karsten Weber (Technology Assessment)

Assistant Researchers

Amelie Altenbuchner, M.A. (RCHST Prospective Study)

Uta Bittner, Mag. (RCHST Ethical Instruments)

Annabell Mehne, M.A. (RCHST)

Nadine Kleine, M.A. (ETN, CANVAS)

Vasilija Rolfes (RCHST Ethical Instruments)

Simon Schmidbauer, M.A. (open vhb, DePaGe)

Ulrike Scorna, M.A. (HaptiVisT, Avenue-Pal)

Arne Sonar, M.A. (RCHST KI and Ethics)

Postal Address

OTH Regensburg

Institute für Social Research and Technology
Assessment (IST)

Faculty Social and Health Care Sciences

Seybothstr. 2

93053 Regensburg

Project Rooms: OTH Regensburg, Galgenbergstr. 24,
Room 1066, 1064, 1062

Contact

sonja.haug@oth-regensburg.de

karsten.weber@oth-regensburg.de

www.oth-regensburg.de/IST

Working Focus

1. Sociological survey research, evaluations and monitoring
2. Technology assessment, innovation and technology research; ethical, legal and social aspects (ELSA) of technology, acceptance issues, mainly in the field of information and communication technologies (ICT), life sciences and energy technology.

Services

- ◆ Studies, evaluations, surveys, expertises
- ◆ Consulting for companies, governmental and non-governmental organisations
- ◆ Organization of public events
- ◆ ELSA research
- ◆ Consulting in ethics committees

Research Methods

- ◆ Literature research and studies, content analysis
- ◆ Standardized surveys (written, verbal, online)
- ◆ Analysis of official data, process produced data etc.
- ◆ Secondary analysis
- ◆ Qualitative interviews
- ◆ Delphi studies and scenario building
- ◆ Evaluation of technology according to DIN standard
- ◆ MEESTAR (in-house developed method) for the ethical evaluation of technology

OTH Research Cluster „Ethics, Technology Assessment, Sustainable Management (ETN)“ since 2014

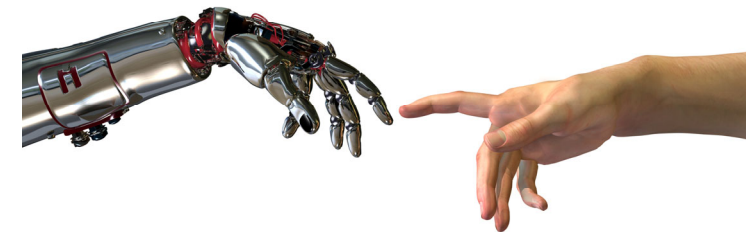


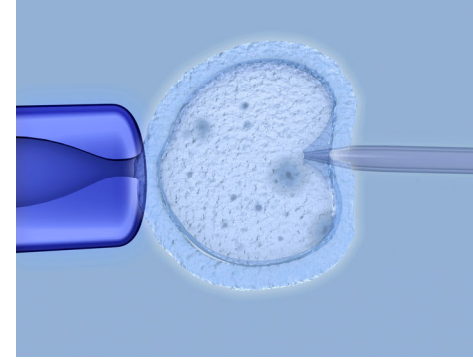
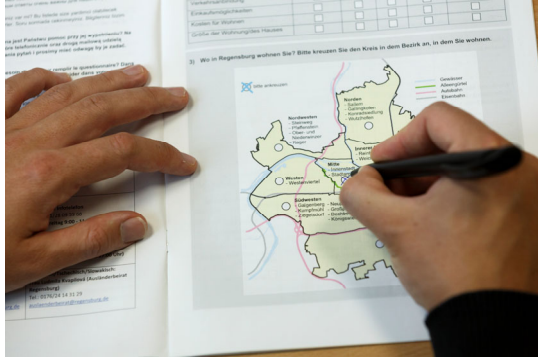
OSTBAYERISCHE
TECHNISCHE HOCHSCHULE
REGENSBURG

IST

INSTITUT FÜR SOZIALFORSCHUNG
UND TECHNIKFOLGENABSCHÄTZUNG

Institute for Social Research and Technology Assessment (IST)





Social Research

- ◆ Attitudes towards democracy and participation of refugees (DePaGe), Research Alliance For Democracy (BayFor), 2018–2022
- ◆ Adult education survey (VHS Regensburg), 2017–2018
- ◆ Refugees in Bavaria (FIB), Hanns-Seidel-Foundation, 2016–2018
- ◆ Evolution of a survey on location satisfaction for IHK Regensburg/Kelheim, 2015
- ◆ Demand study for developing offers of the district library and adult evening college, Candis Regensburg, 2015
- ◆ Survey of graduates of the Faculty Social and Health Care Sciences, 2014
- ◆ Accessibility in Regensburg, Regensburg Inklusiv, 2013–2014
- ◆ Integretation report and concept for Regensburg, supported by EIF, 2012–2014
- ◆ Survey on the innovation behaviour of small and medium-sized enterprises in the IHK district Regensburg/Kelheim, 2014
- ◆ Evaluation of pilot projects to coordinate integration courses of the Federal Office for Migration and Refugees, 2012–2014
- ◆ People with personal assistance, ISB Diakonie Regensburg, 2013
- ◆ Scientific monitoring of the integration report Ingolstadt, 2013
- ◆ Survey in higher vocational schools in Eastern Bavaria, 2012–2013
- ◆ Citizen survey on the cultural development plan Regensburg, 2012
- ◆ Survey of Bachelor students of the OTH Regensburg, 2011

Health, Medicine & Care

In cooperation with Regensburg Center of Health Sciences and Technology (RCHST)

- ◆ Ethical instruments for health care assessment, RCHST, 2018–2019
- ◆ AI and ethics, RCHST, 2018–2019
- ◆ Prospective study on usability and utility of consumer activity tracker, CURA Caritas hospital St. Josef Regensburg, RCHST, 2017–2019
- ◆ Ethical assessment for Avenue-Pal, GBA Innovation Fund, 2018–2020
- ◆ CANVAS – Constructing an Alliance for Value-driven Cybersecurity (IST: focus on health), EU/HORIZON 2020, 2016–2019
- ◆ ELSA research on the development and evaluation of a haptic-visual learning system for surgical interventions (HaptiVisT), BMBF, 2016–2018
- ◆ An evaluation of the influence of personal, telephone- and Internet-based counseling on the compliance in the treatment of Multiple Sclerosis (MS) – panel study, TEVA pharma GmbH, 2014–2016
- ◆ The influence of social networks on knowledge transfer in reproductive medicine (NeWiRe), BMBF, 2013–2017

Energy & Mobility

- ◆ ELSA research for the project MAGGIE – Restoration and energetic modernization of the historical cooperative residential quarter Margaretenau in Regensburg, BMBWi, 2018–2020.

in cooperation with Regensburg Center of Energy and Resources (RCER), co-funding by Technology and Science Network Upper Palatinate (TWO)

- ◆ Social aspects of energy-efficient retrofit of residential buildings – social survey of RENARHIS, BBSR, 2012–2014
- ◆ Mobility on Campus Regensburg, in cooperation with the Regional Energy Agency Regensburg, 2015
- ◆ Pilot study on the acceptance of resource-sensitive behaviour in everyday life, 2014
- ◆ Electromobility and carsharing in Regensburg—social aspects of sustainable mobility, 2013
- ◆ Demographic change and energy transformation from the perspective of those involved in Eastern Bavaria, 2013

ICT & Human-Technology Interaction

- ◆ Accompanying research for identification of driving modes, Bertrandt GmbH, 2015–2016
- ◆ Study on the inclusive effect of an automated gamified tutorial for a gesture-driven semi-automated assistance system, in cooperation with Regensburg Robotics Research Unit (RRRU), 2015–2016